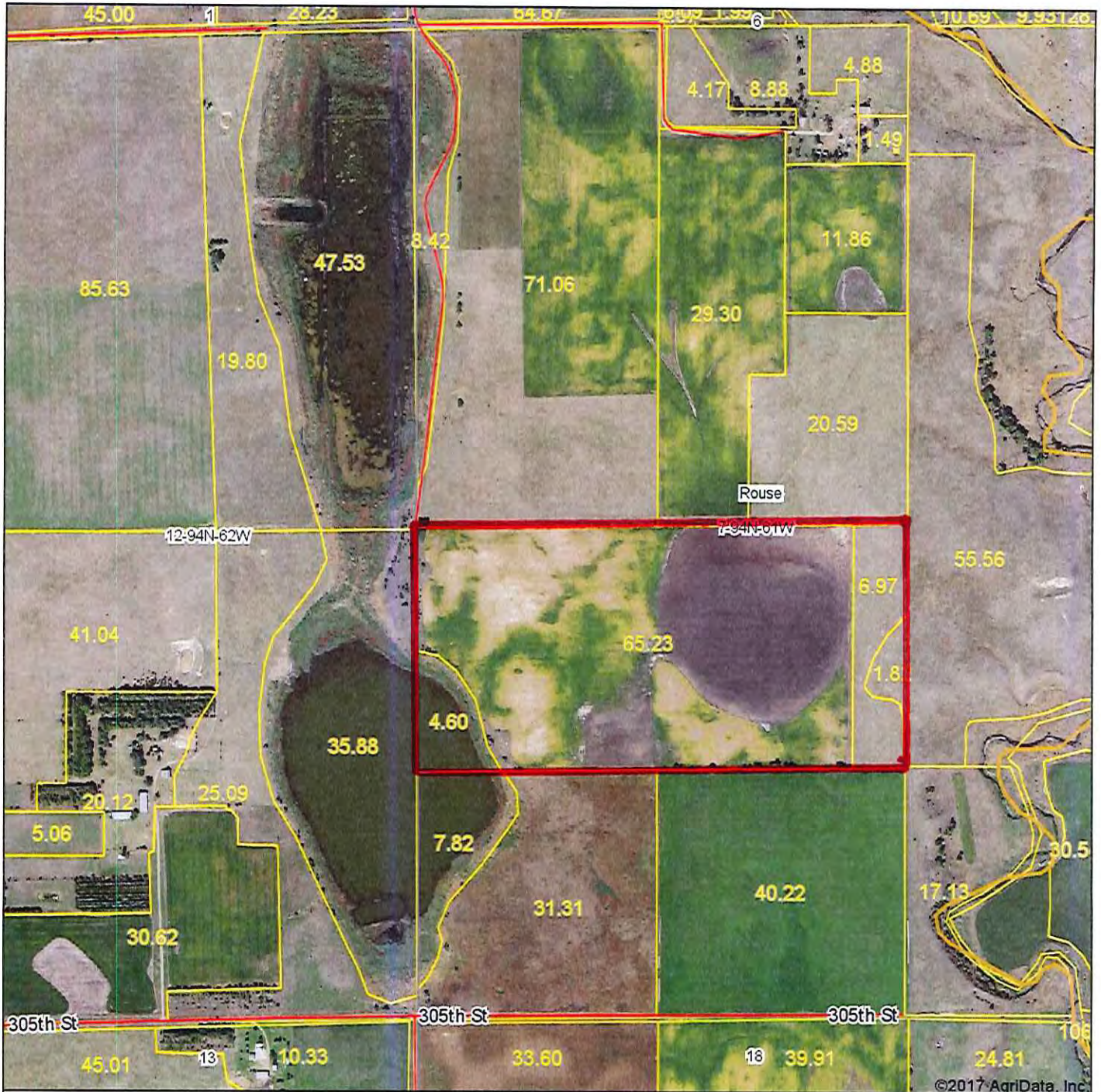
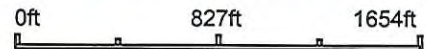


Aerial Map



©2017 AgriData, Inc.

map center: 42° 58' 25.96, -98° 6' 23.46



Maps Provided By:



© AgriData, Inc. 2017

www.AgriDataInc.com

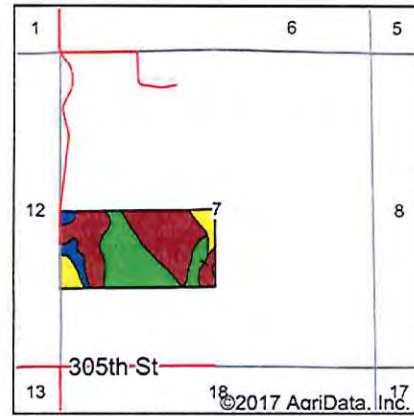
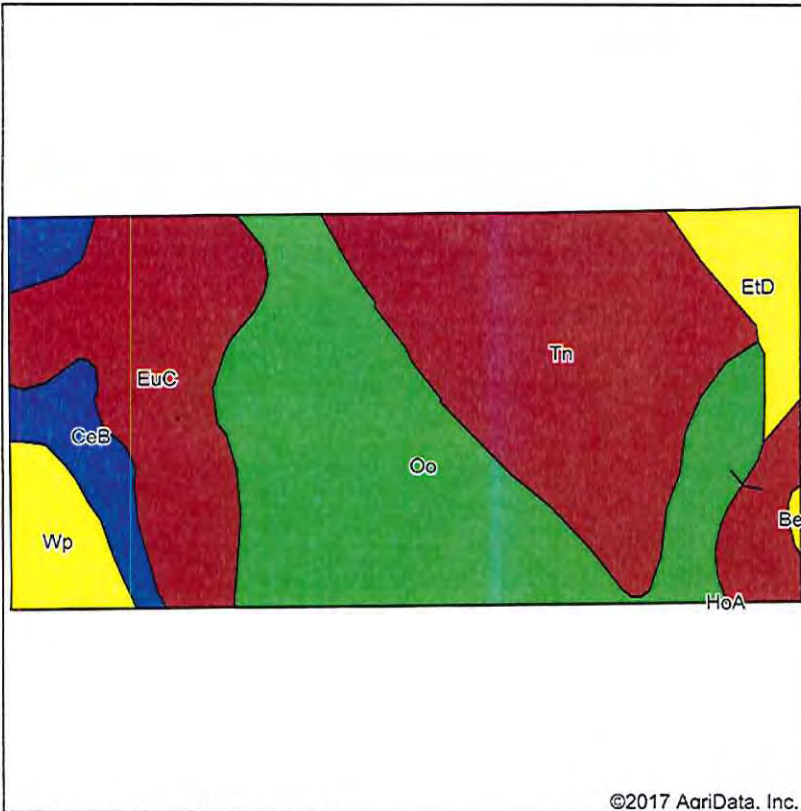
7-94N-61W
Charles Mix County
South Dakota



8/3/2017

Field borders provided by Farm Service Agency as of 5/21/2008.

Soils Map



State: **South Dakota**
 County: **Charles Mix**
 Location: **7-94N-61W**
 Township: **Rouse**
 Acres: **78.62**
 Date: **9/14/2017**

Maps Provided By:

© AgriData, Inc. 2017 www.AgriDataInc.com

Soils data provided by USDA and NRCS.

©2017 AgriData, Inc.

Area Symbol: SD023, Soil Area Version: 23

Code	Soil Description	Acres	Percent of field	PI Legend	Non-Irr Class *c	Productivity Index	State Productivity Index	Alfalfa hay	Bromegrass alfalfa	Corn	Grain sorghum	Oats	Spring wheat	Winter wheat
Oo	Onita-Davison complex	26.42	33.6%		IIc	87	66	3.1	5.2	66	67	70	31	37
Tn	Tetonka-Chancellor silty clay loams	22.87	29.1%		IVw	66	50							
EuC	Ethan-Homme complex, 6 to 9 percent slopes	17.21	21.9%		IVe	64	49							
CeB	Clarno-Ethan-Bonilla loams, 1 to 6 percent slopes	4.65	5.9%		Ile	78	59							
Wp	Worthing silty clay loam, ponded, 0 to 1 percent slopes	3.71	4.7%		VIIIw	10	8							
EtD	Ethan-Clarno loams, 9 to 15 percent slopes	3.60	4.6%		Vle	46	35							
BeE	Betts-Ethan loams, 9 to 25 percent slopes	0.16	0.2%		Vle	22	17							
Weighted Average						69.7	53	1	1.7	22.2	22.5	23.5	10.4	12.4

*c: Using Capabilities Class Dominant Condition Aggregation Method

Soils data provided by USDA and NRCS.